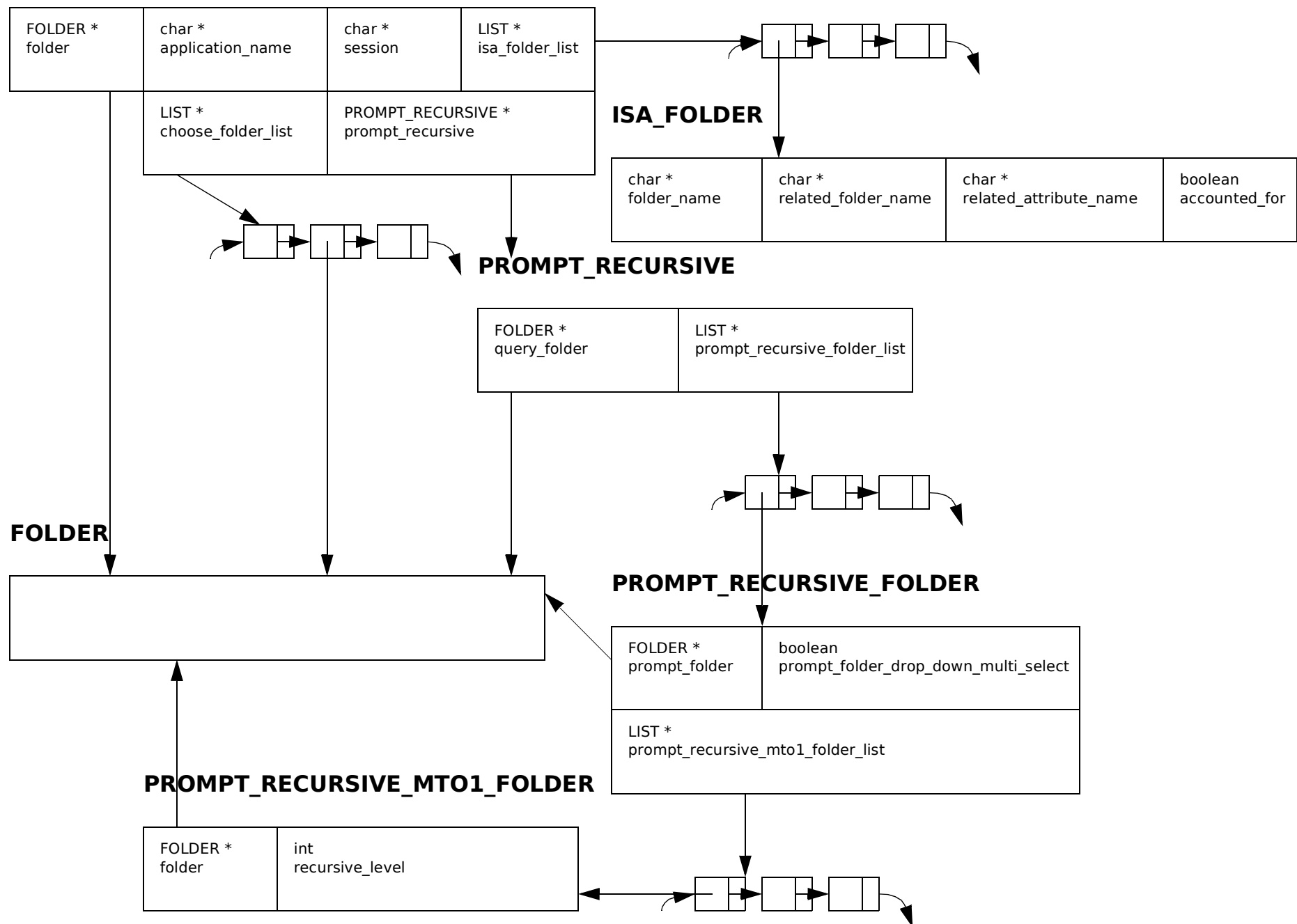


APPASERVER Data Structure

APPASERVER



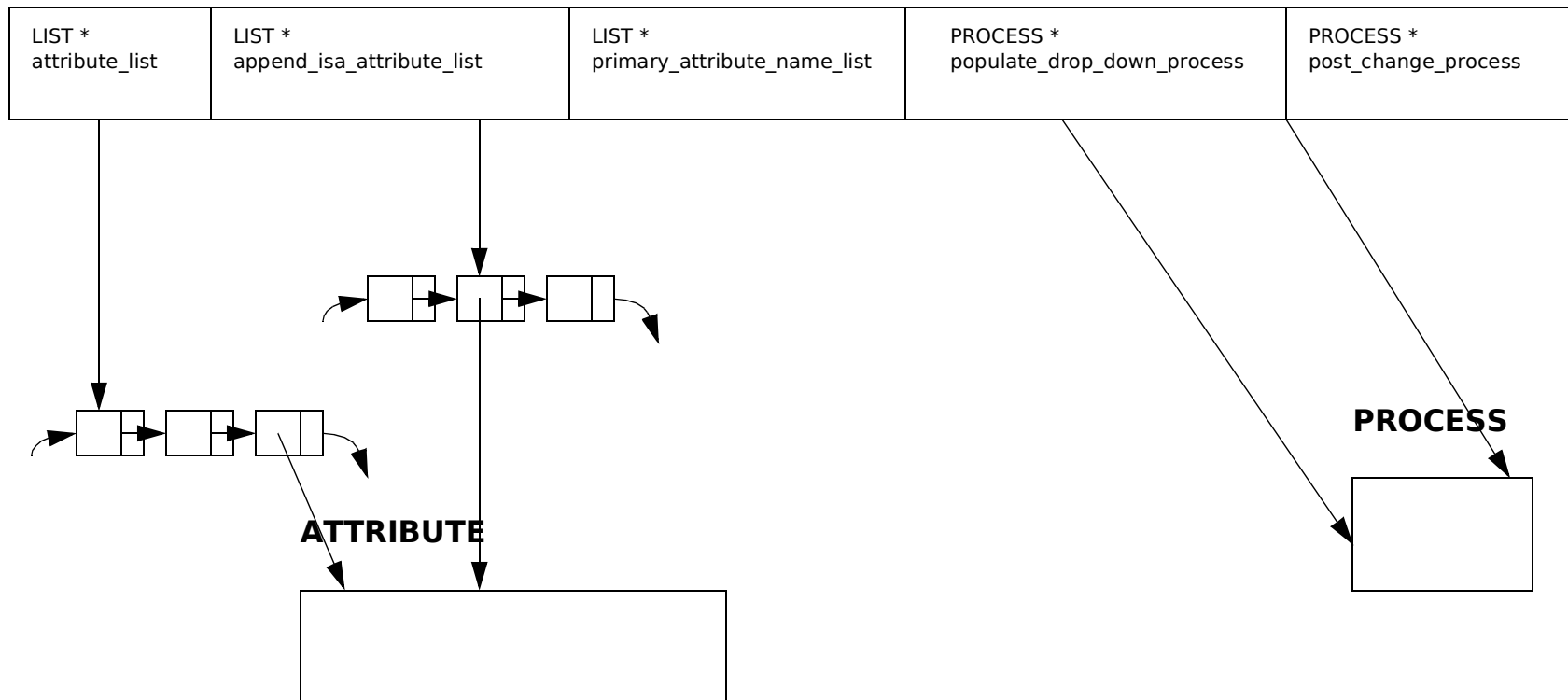
APPASERVER Data Structure

FOLDER

char * folder_name	int insert_rows_number	long row_count	boolean insert_permission	boolean update_permission	boolean lookup_permission	char * post_change_javascript
boolean lookup_email_output		char * application_name		char * session	char * folder_form	long row_access_count
boolean lookup_before_drop_down		char * notepad	char * html_help_file_anchor			
LIST *non_primary_attribute_list boolean lookup_transmit_output boolean row_level_non_owner_forbid boolean row_level_non_owner_view_only boolean no_initial_capital char *schema_name DICTIONARY *primary_data_dictionary						

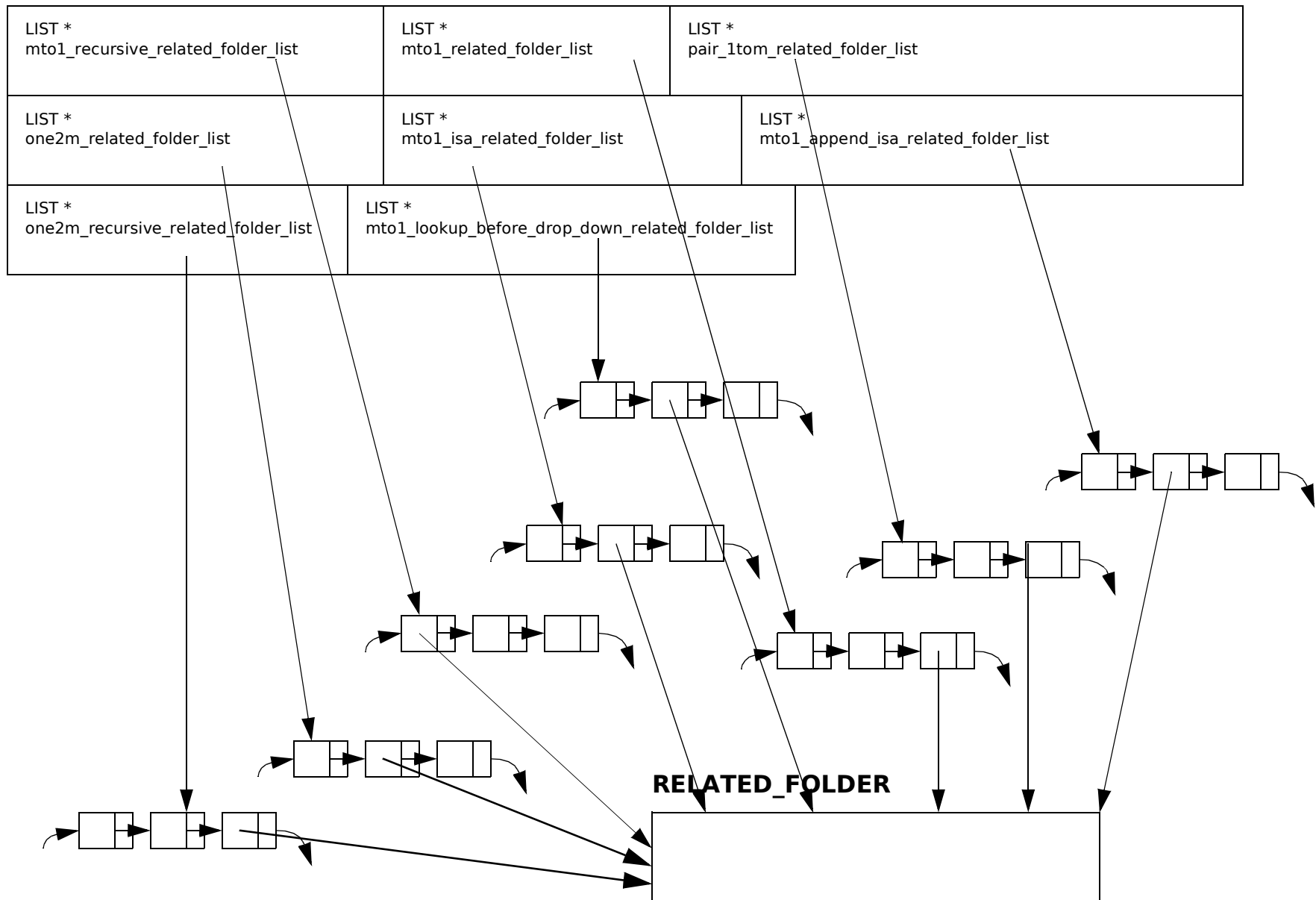
APPASERVER Data Structure

FOLDER (con't.)



APPASERVER Data Structure

FOLDER (con't.)



APPASERVER Data Structure

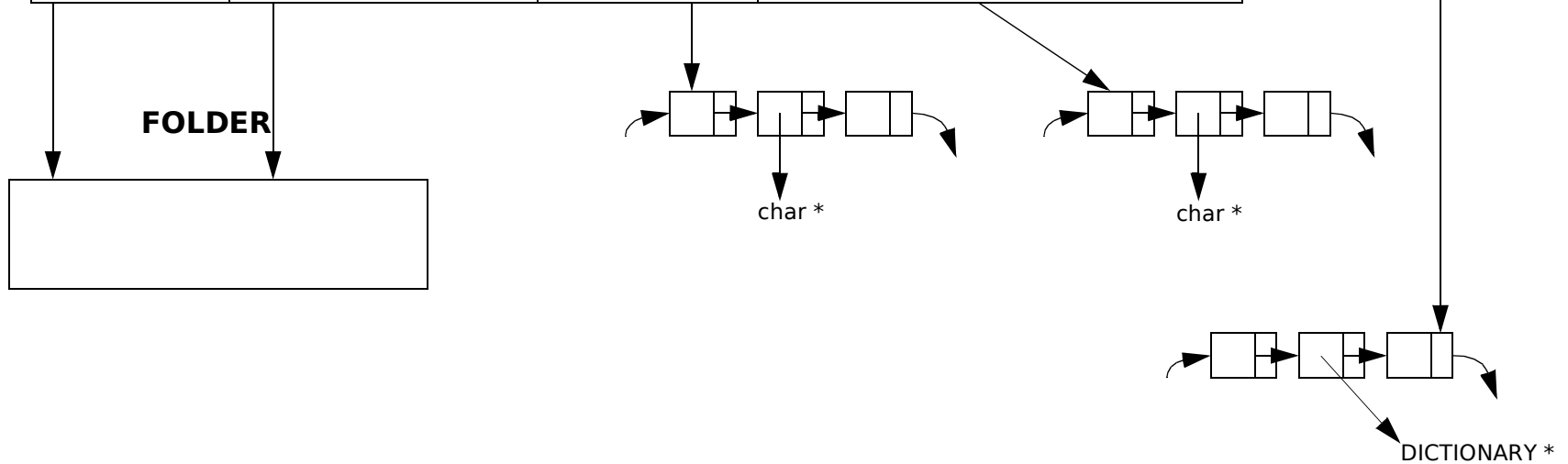
ATTRIBUTE

char * attribute_name	char * datatype	int primary_key_index	int display_order	boolean omit_insert_prompt	boolean omit_insert
int width	int float_decimal_places	char * hint_message	char * folder_name	boolean lookup_required	boolean insert_required
boolean optional_primary_key LIST *exclude_permission_list char *post_change_javascript char *on_focus_javascript_function boolean additional_unique_index boolean additional_index boolean lookup_histogram_output boolean lookup_time_chart_output boolean appaserver					

APPASERVER Data Structure

RELATED_FOLDER

boolean relation_type_isa	char * related_attribute_name	int pair_1tom_order	boolean null_1tom_upon_delete	boolean ignore_output
char * hint_message	boolean copy_common_attributes	boolean prompt_mto1_recursive	boolean omit_1tom_detail	
LIST * foreign_attribute_name_list	LIST * folder_foreign_attribute_name_list	char * join_where_clause	boolean drop_down_multi_select	
boolean automatic_preselection	LIST * parent_foreign_attribute_name_list		LIST * automatic_preselection_dictionary_list	
FOLDER * folder	FOLDER * one2m_related_folder	LIST * primary_data_list	LIST * common_non_primary_attribute_name_list	



APPASERVER Data Structure

ROW_SECURITY

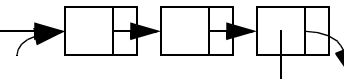
char * login_name	char * state	ROLE * login_role	
DICTIONARY * preprompt_dictionary		DICTIONARY * query_dictionary	DICTIONARY * sort_dictionary
ROW_SECURITY_ELEMENT_LIST_STRUCTURE * row_security_element_list_structure			
LIST * no_display_pressed_attribute_name_list		LIST * role_update_list	
enum row_security_state	{ security_supervisor security_user regular_supervisor regular_user		
char * attribute_not_null_string			
FOLDER * foreign_login_name_folder	FOLDER * attribute_not_null_folder	FOLDER * select_folder	

ROLE

char * role_name	boolean override_row_restrictions
---------------------	--------------------------------------

ROW_SECURITY_ELEMENT_LIST_STRUCTURE

--



ROW_SECURITY_ROLE_UPDATE

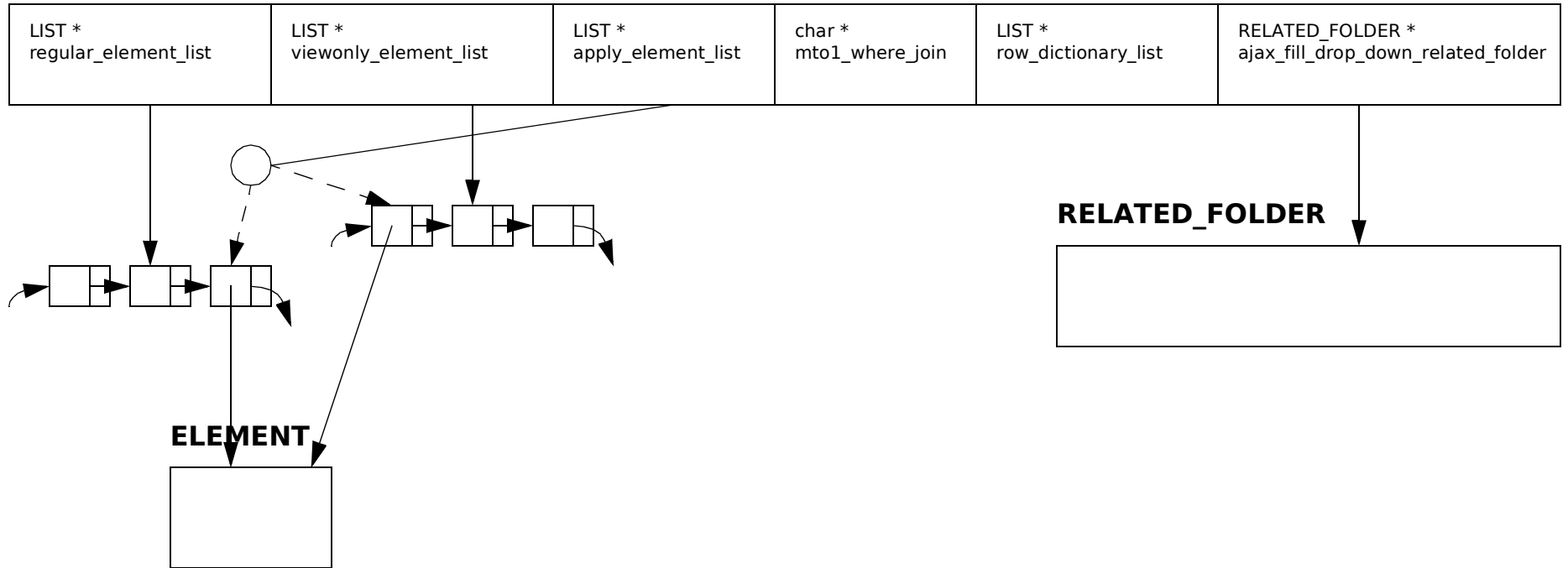
FOLDER * folder	char * attribute_not_null_string
--------------------	-------------------------------------

FOLDER

char * folder_name	LIST * append_isa_attribute_list	LIST * mto1_recursive_related_folder_list	LIST * mto1_isa_related_folder_list	LIST * mto1_append_isa_related_folder_list
LIST * one2m_recursive_related_folder_list	LIST * join_1tom_related_folder_list	boolean row_level_non_owner_forbid	boolean row_level_non_owner_vewonly	

APPASERVER Data Structure

ROW_SECURITY_ELEMENT_LIST_STRUCTURE



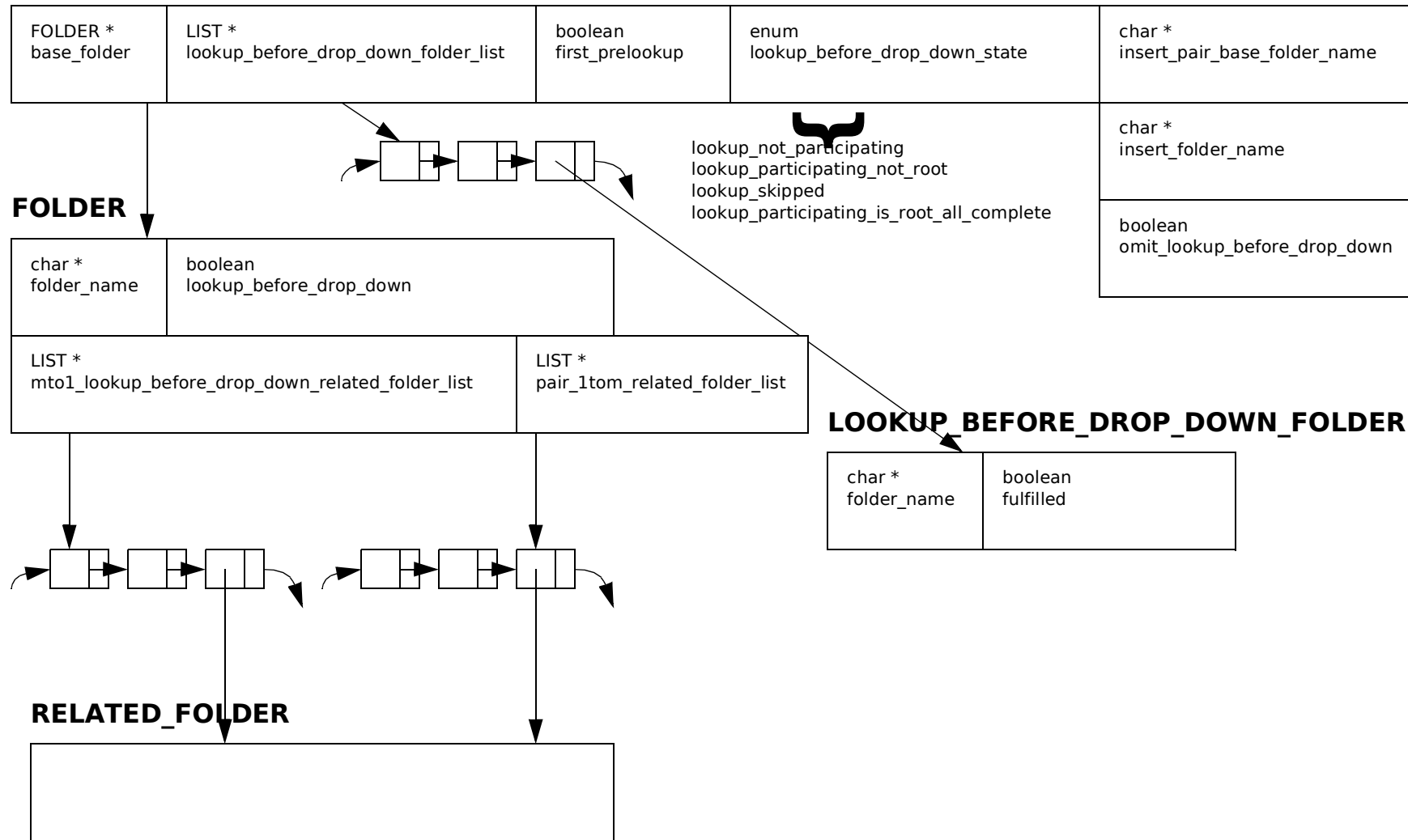
APPASERVER Data Structure

ELEMENT

char * name	enum element_type element_type	boolean remember_keystrokes_ok	int tab_index
drop_down push_button radio_button notepad password non_edit_text line_break text_item upload_filename prompt_data prompt_data_plus_hidden reference_number hidden empty_column blank element_date element_current_date	element_time element_current_time http_filename timestamp		ELEMENT_DROP_DOWN *drop_down ELEMENT_PUSH_BUTTON *push_button ELEMENT_RADIO_BUTTON *radio_button ELEMENT_NOTEPAD *notepad ELEMENT_LINEBREAK *linebreak ELEMENT_TEXT_ITEM *text_item ELEMENT_PASSWORD *password ELEMENT_PROMPT_DATA *prompt_data ELEMENT_HIDDEN *hidden ELEMENT_UPLOAD_FILENAME *upload_filename ELEMENT_HTTP_FILENAME *http_filename ELEMENT_ANCHOR *anchor ELEMENT_EMPTY_COLUMN *empty_column ELEMENT_REFERENCE_NUMBER *reference_number ELEMENT_NON_EDIT_TEXT *non_edit_text

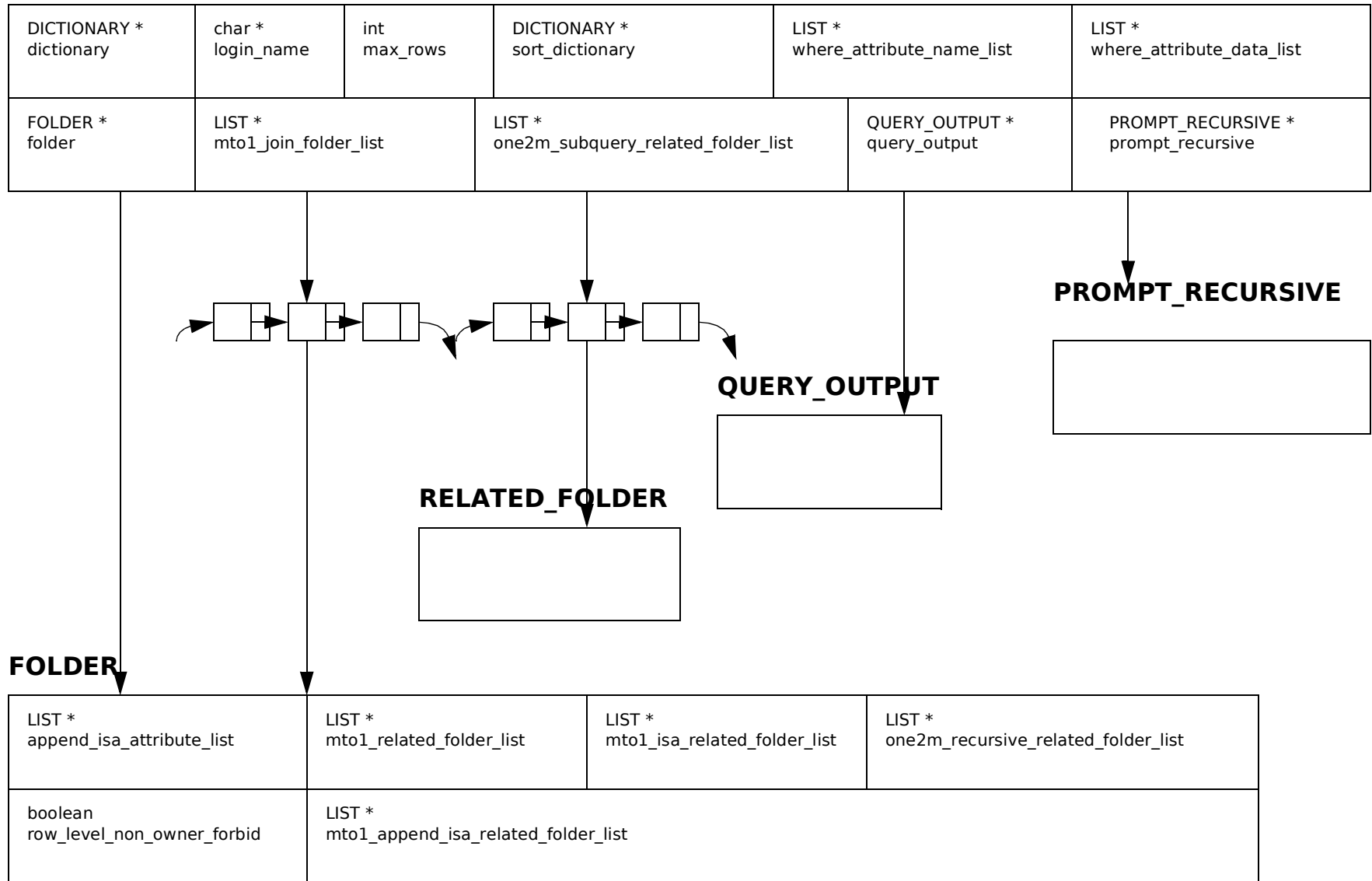
APPASERVER Data Structure

LOOKUP_BEFORE_DROP_DOWN



APPASERVER Data Structure

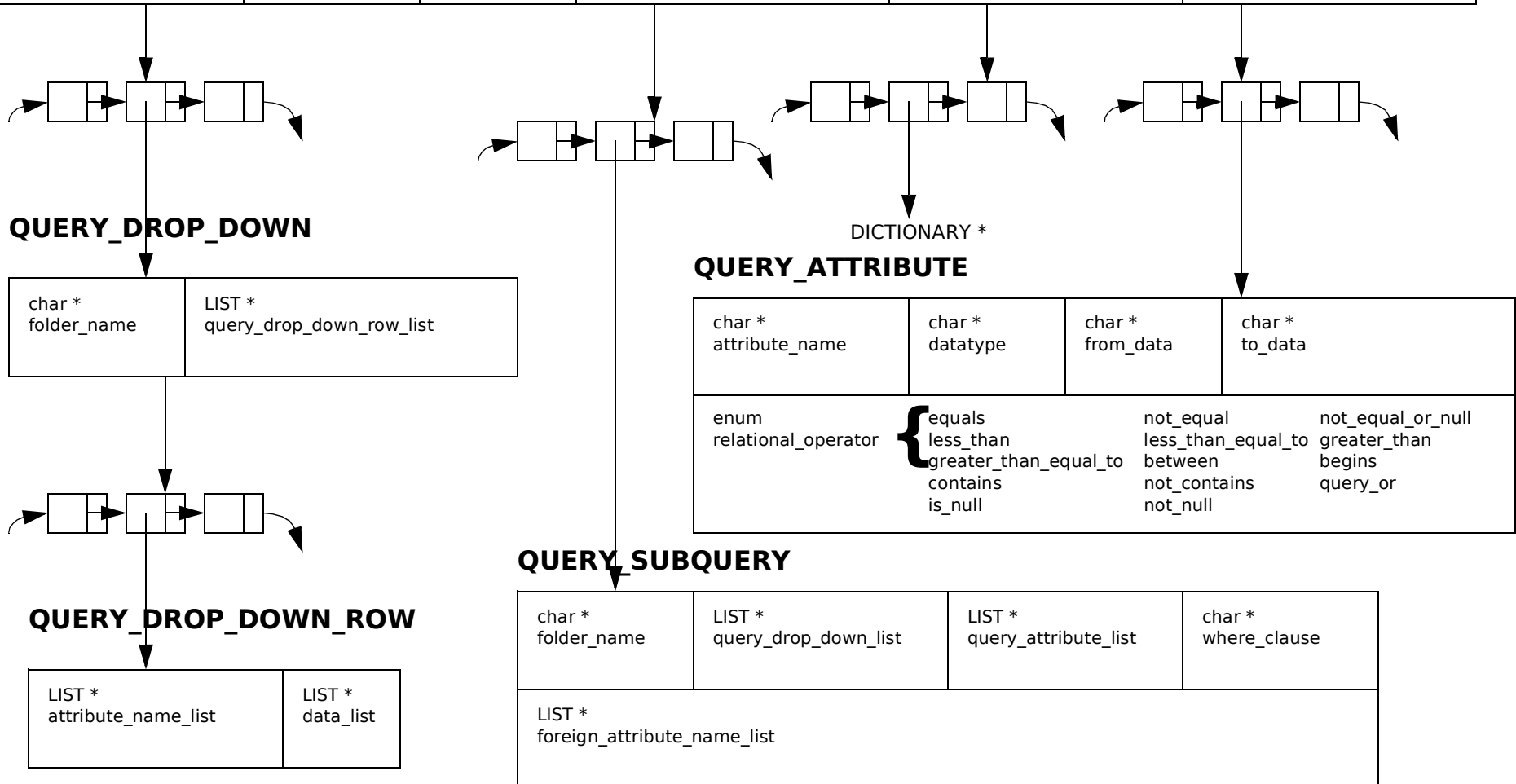
QUERY



APPASERVER Data Structure

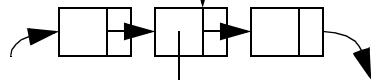
QUERY_OUTPUT

char * select_clause	char * from_clause	char * drop_down_where_clause	char * attribute_where_clause	char * non_joined_where_clause	char * subquery_where_clause
LIST * query_drop_down_list	char * where_clause	char * order_clause	LIST * query_subquery_list	LIST * row_dictionary_list	LIST * query_attribute_list



QUERY_DROP_DOWN

char * folder_name	LIST * query_drop_down_row_list
-----------------------	------------------------------------



QUERY_DROP_DOWN_ROW

LIST * attribute_name_list	LIST * data_list
-------------------------------	---------------------

QUERY_ATTRIBUTE

char * attribute_name	char * datatype	char * from_data	char * to_data
enum relational_operator	{ equals less_than greater_than_equal_to contains is_null	not_equal less_than_equal_to between not_contains not_null	not_equal_or_null greater_than begins query_or

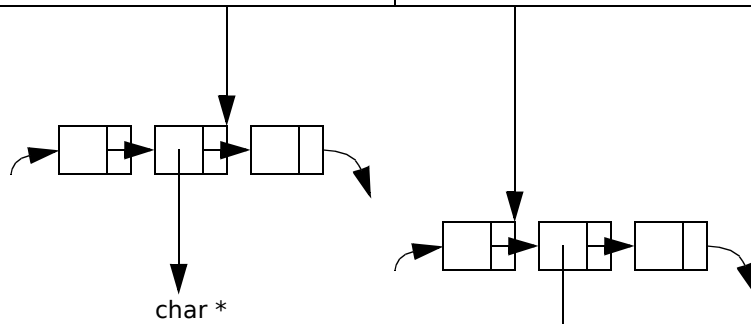
QUERY_SUBQUERY

char * folder_name	LIST * query_drop_down_list	LIST * query_attribute_list	char * where_clause
LIST * foreign_attribute_name_list			

APPASERVER Data Structure

UPDATE_DATABASE

char * application_name	char * session	char * login_name	char * role_name	DICTIONARY * post_dictionary	DICTIONARY * file_dictionary
LIST * exclude_attribute_name_list		LIST * update_row_list		FOLDER * folder	DICTIONARY * foreign_attribute_dictionary

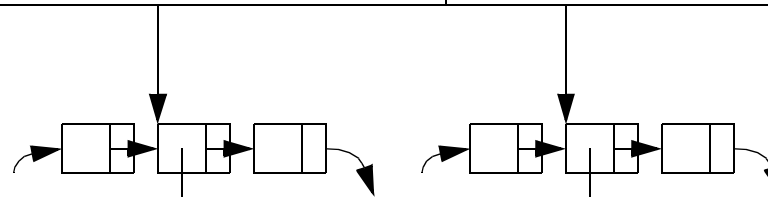


UPDATE_ROW



FOLDER

LIST * one2m_recursive_related_folder_list	LIST * mto1_isa_related_folder_list
---	--



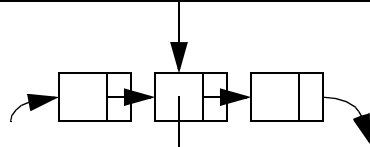
RELATED_FOLDER

FOLDER * one2m_related_folder	FOLDER * one2m_related_folder
----------------------------------	----------------------------------

APPASERVER Data Structure

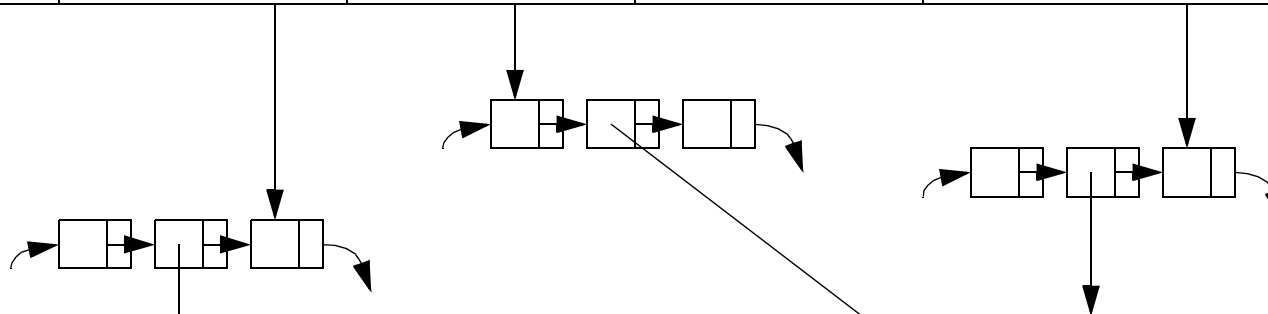
UPDATE_ROW

int row	LIST * update_folder_list	boolean changed_key
------------	------------------------------	------------------------



UPDATE_FOLDER

char * folder_name	LIST * where_attribute_list	LIST * changed_attribute_list	PROCESS * post_change_process	LIST * primary_attribute_name_list
-----------------------	--------------------------------	----------------------------------	----------------------------------	---------------------------------------



WHERE_ATTRIBUTE

char * attribute_name	char * data
--------------------------	----------------

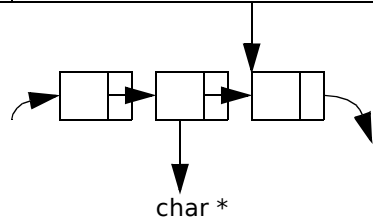
CHANGED_ATTRIBUTE

char * attribute_name	char * old_data	char * new_data
--------------------------	--------------------	--------------------

APPASERVER Data Structure

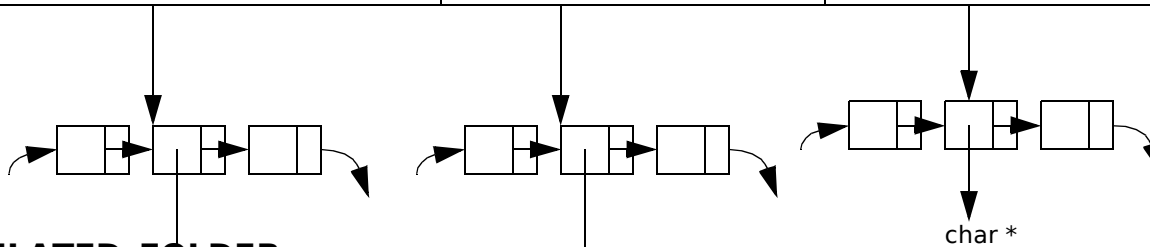
DELETE_DATABASE

char * application_name	boolean dont_delete_mto1_isa	char * sql_executable	char * login_name	char * role_name
FOLDER * folder	LIST * primary_attribute_data_list			LIST * delete_folder_list



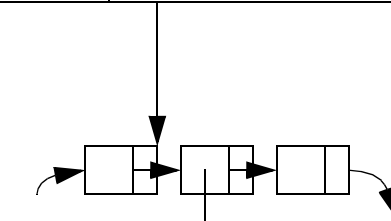
FOLDER

char * folder_name	boolean row_level_non_owner_forbid	boolean row_level_non_owner_view_only
LIST * one2m_recursive_related_folder_list	LIST * mto1_isa_related_folder_list	LIST * primary_attribute_name_list



RELATED_FOLDER

FOLDER * one2m_related_folder	FOLDER * one2m_related_folder	boolean null_1tom_upon_delete
----------------------------------	----------------------------------	----------------------------------

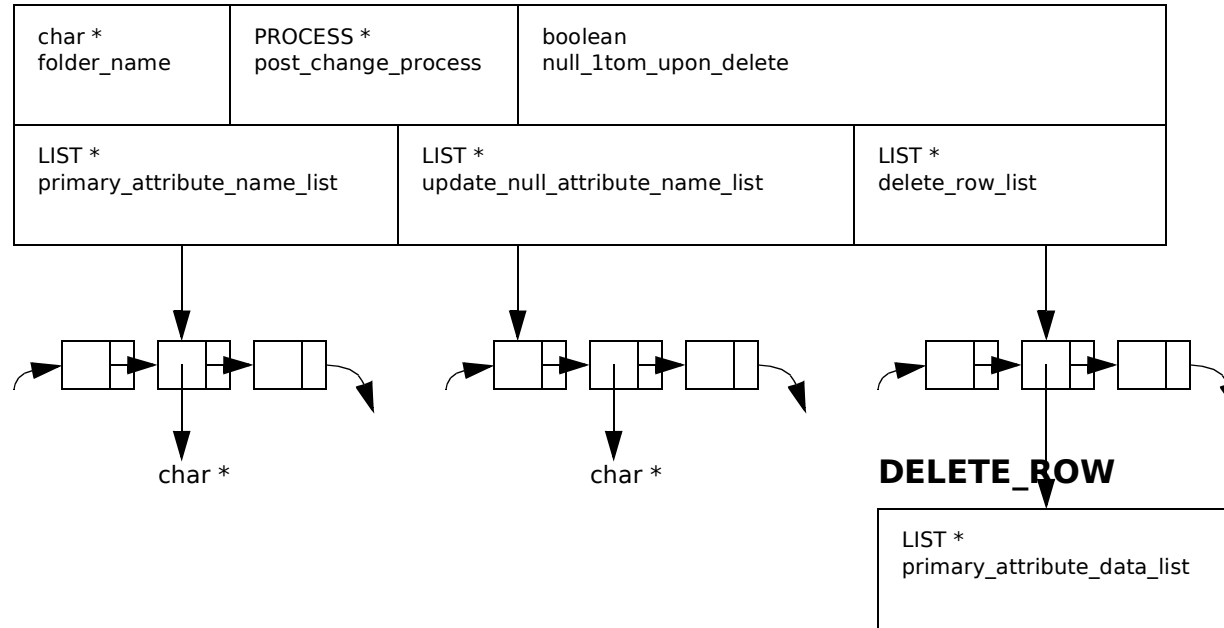


DELETE_FOLDER



APPASERVER Data Structure

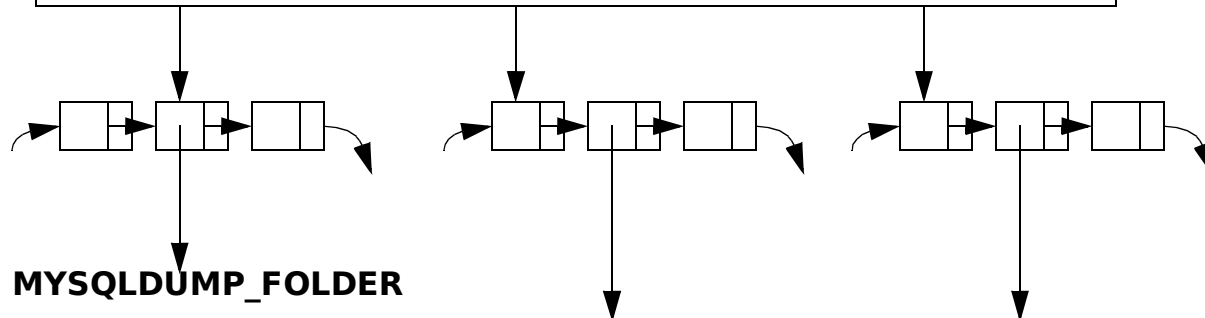
DELETE_FOLDER



APPASERVER Data Structure

MYSQLDUMP

```
char *  audit_database_filename  
char *  prior_audit_database_filename  
LIST *  audit_mysql_dump_folder_list  
LIST *  prior_mysql_dump_folder_list  
LIST *  reached_percentage_drop_name_list
```



MYSQLDUMP_FOLDER

```
char *  folder_name  
int     row_count  
double  percentage_drop  
boolean table_exists
```